

# Scissor Lift Table Power Packs

## General Description

Product: Hydraulic Power Unit For Lift Table

Reservoir Capacity: Steel or Plastic 1.32 to 3.17Gal

Motor: 220V AC 1.5KW

Flow: 0.77 to 2.43 GPM

Valve: Cartridge valve

System Pressure:

2320/2900PSI

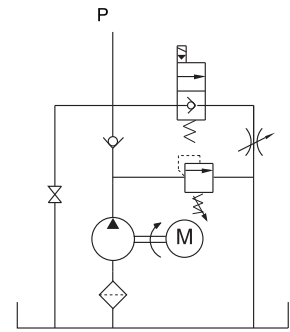
Oil Port: G1/2 or M20x1.5

Manufacturer Warranty: 1 year Limited

Warranty



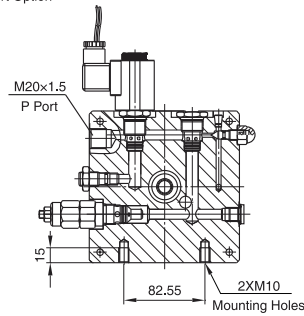
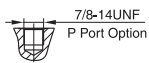
## Hydraulic Circuit Diagram



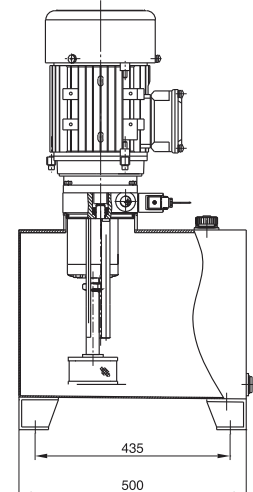
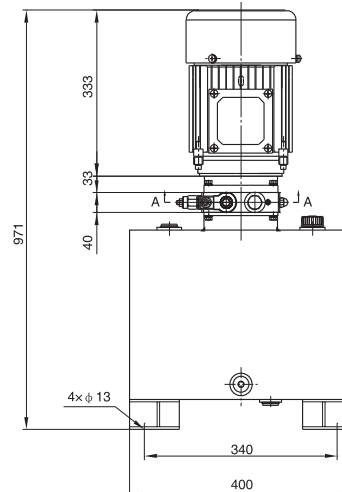
Scissor lift table power unit has been widely used in the industry of logistic devices such as Electric lift table, Scissor lift Table and Pallet Lift Table. The lowering movement is controlled by cartridge solenoid valve or cartridge manual valve and its speed is controlled by the adjustable throttle valve, which will protect the scissor lift table effectively. The manual override function is available on request.

60HZ motors with CSA or UL certification are available upon request.

## Outline Dimension



Section A-A



## Model Specifications

Model	Motor Volt	Motor Power	Rated Speed	Displacement	System Pressure	Tank Capacity	L(mm)
HPP-2F2.15A2203H	220VAC	1.5KW	1400RPM	2.1mL/r	20MPa	5L	645
HPP-2E2.16A2203H				2.7mL/r	20MPa	6L	690
HPP-2E3.28A2203H				3.2mL/r	16MPa	8L	795
HPP-2F2.18A3804H	380V	2.2KW	2880RPM	2.1mL/r	20MPa	8L	795
HPP-2F2.710A3804H				2.7mL/r	20MPa	10L	885
HPP-2E3.212A3804H				3.2mL/r	16MPa	12L	905

## Special Notes

- 1)Due to various types of hydraulic system failure occur more than 80% of the problems are caused by hydraulic oil, so the correct use of hydraulic oil to ensure the system's reliability is very important. The oil viscosity should be 22-46mm<sup>2</sup>/s in accordance with ISO3448 viscosity classification. The hydraulic oil should be filtered by a 10-30um filter before put into use. N46 hydraulic oil is recommended.
- 2)Clean all the hydraulic parts concerned before mounting mini hydraulic power pack. Check the oil level in the tank after the initial running of small hydraulic power unit.
- 3)Oil changing is required after the initial 100 operation hours, afterwards once every 3000 hours. We are at your disposal to offer you the power unites with your favorite power, flow, pressure as well as the tank capacity.
- 4)The electric hydraulic pump should be horizontal installation.
- 5)The electric hydraulic pump is of s3 duty, which can be only worked intermittently, ie., 1 minute on and 9 minutes off.
- 6)To achieve thermal equilibrium of the electric motor, we have to assure that the ratio between interval time and operation time of mini hydraulic power pack is 1:9.