

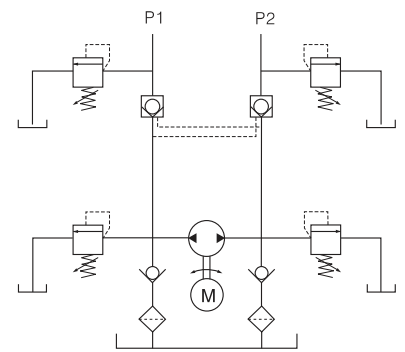
# RV Hydraulic Power Packs

## General Description

- Product: DC hydraulic power unit
- Reservoir Capacity: Steel or Plastic 3.7Gal
- Motor:24V DC 0.8KW
- Flow:0.45 to 0.58 GPM
- Valve: Cartridge valve
- System Pressure: 2537.5PSI
- Oil Port:G1/4 or M14x1.5 P1/P2
- Manufacturer Warranty:1 year Limited Warranty

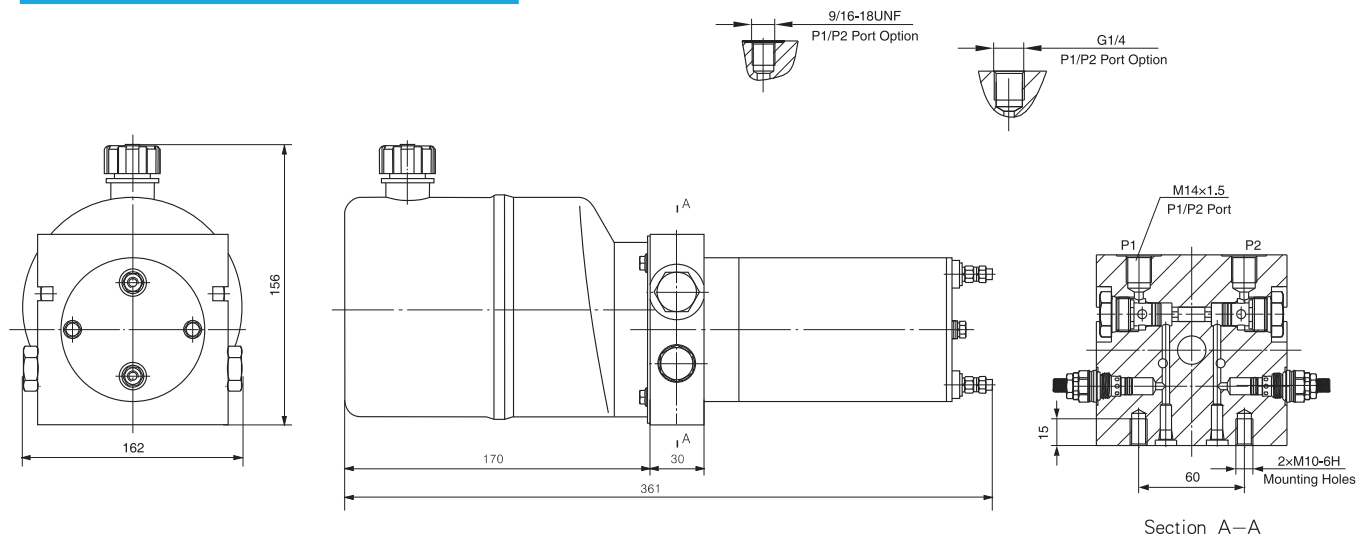


## Hydraulic Circuit Diagram



The DC Hydraulic power unit can drive a double acting cylinder to extend and retract without a directional solenoid valve.

## Outline Dimension



## Model Specifications

Model	Motor Volt	Motor Power	Displacement	System Pressure	Tank Capacity
HPP-101E0.514D1202H/V	12VDC	0.8KW	0.5mL/r	17.5MPa	14L
HPP-101E0.6314D2402H/V	24VDC		0.63mL/r		

## Special Notes

- 1)Due to various types of hydraulic system failure occur more than 80% of the problems are caused by hydraulic oil, so the correct use of hydraulic oil to ensure the system's reliability is very important.The oil viscosity should be 22-46mm<sup>2</sup>/s in accordance with ISO3448 viscosity classification.The hydraulic oil should be filtered by a 10-30um filter before put into use.N46 hydraulic oil is recommended.
- 2)Clean all the hydraulic parts concerned before mounting mini hydraulic power pack.Check the oil level in the tank after the initial running of small hydraulic power unit.
- 3)Oil changing is required after the initial 100 operation hours, afterwards once every 3000 hours.We are at your disposal to offer you the power unites with your favorite power,flow,pressure as well as the tank capacity.
- 4)The electric hydraulic pump should be vertical or horizontal installation.
- 5)The electric hydraulic pump is of S3 duty,which can only work intermittently and repeatedly, i.e., 30 seconds on and 270 seconds off.
- 6)To achieve thermal equilibrium of the electric motor, we have to assure that the ratio between interval time and operation time of mini hydraulic power pack is 1:9.