

Power Units For Small Scissor Lift

General Description

Product: Power Units For Scissor Lift

Reservoir Capacity: Steel 0.52Gal

Motor: 110V AC 550W

Flow: 0.45 to 0.68 GPM

Valve: 12/24VDC 110V Solenoid

System Pressure: 2030 to 3190PSI

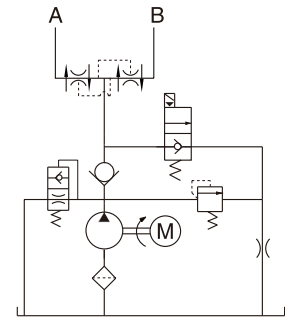
Oil Port:G1/4 or M14x1.5 A/B

Manufacturer Warranty:1 year Limited

Warranty



Hydraulic Circuit Diagram

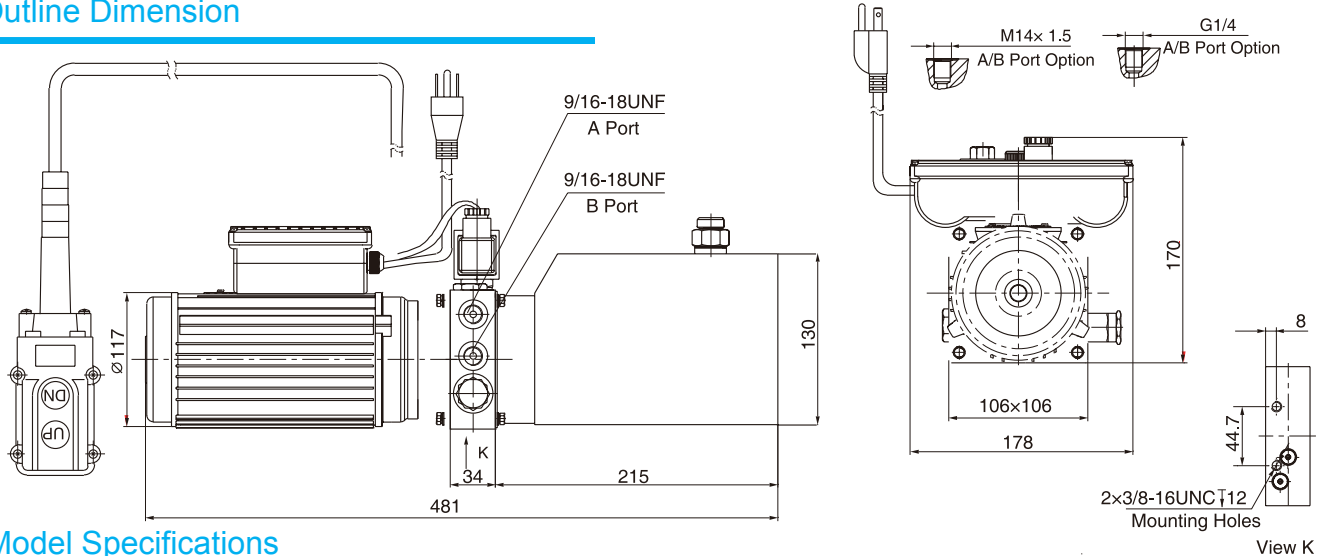


This power unit features typically power up, gravity down with machine weight function. The lowering movement is controlled by the solenoid valve while the lower speed is controlled by nonadjustable throttle valve. The high precision flow divider/combiner valve enables the synchronization of the 2 cylinders of the lift.

Cartridge solenoid valve with manual override function is available on request.

AC motors with CSA or UL certification are available upon request.

Outline Dimension



Model Specifications

Model	Motor Volt	Motor Power	Rated Speed	Displacement	System Pressure	Tank Capacity	Solenoid Valve Volt
HPP-195F0.322A1101110H	110VAC	550W	3450RPM	0.32mL/r	22MPa	2L	110VAC
HPP-195F0.752A110124H				0.75mL/r	14MPa		24VDC
HPP-195F0.62A110124H				0.6mL/r	16.5MPa		
HPP-195F0.62A220124H	220VAC	800W	2850/3450RPM	0.6mL/r	16.5MPa		12VDC
HPP-195F0.62A240124H	240VAC		2850RPM				
HPP-195F0.382D120212H	12VDC	800W	3450RPM	0.36mL/r	18MPa		

Special Notes

1)Due to various types of hydraulic system failure occur more than 80% of the problems are caused by hydraulic oil, so the correct use of hydraulic oil to ensure the system's reliability is very important.The oil viscosity should be 22-46mm²/s in accordance with ISO3448 viscosity classification.The hydraulic oil should be filtered by a 10-30um filter before put into use.N46 hydraulic oil is recommended.

2)Clean all the hydraulic parts concerned before mounting mini hydraulic power pack.Check the oil level in the tank after the initial running of small hydraulic power unit.

3)Oil changing is required after the initial 100 operation hours, afterwards once every 3000 hours.We are at your disposal to offer you the power unites with your favorite power,flow,pressure as well as the tank capacity.

4)The electric hydraulic pump should be horizontal installation.

5)The electric hydraulic pump is of s3 duty, i.e., non-continuous operation,30 seconds on and 270 seconds off.

6)To achieve thermal equilibrium of the electric motor, we have to assure that the ratio between interval time and operation time of mini hydraulic power pack is 1:9.