

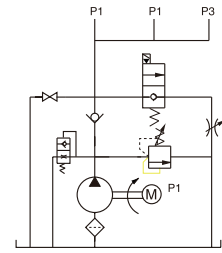
# Power Units For Electric Scissor Lift

## General Description

Product: Power Units For Scissor Lift  
 Reservoir Capacity: Steel 3.96 to 6.6Gal  
 Motor: 380V AC 2.2KW  
 Flow: 1.58 to 2.03 GPM  
 Valve: Cartridge valve  
 System Pressure: 3335/3625PSI  
 Oil Port:G1/4 or M14x1.5 P1/P2/P3  
 Manufacturer Warranty:1 year Limited  
 Warranty



## Hydraulic Circuit Diagram

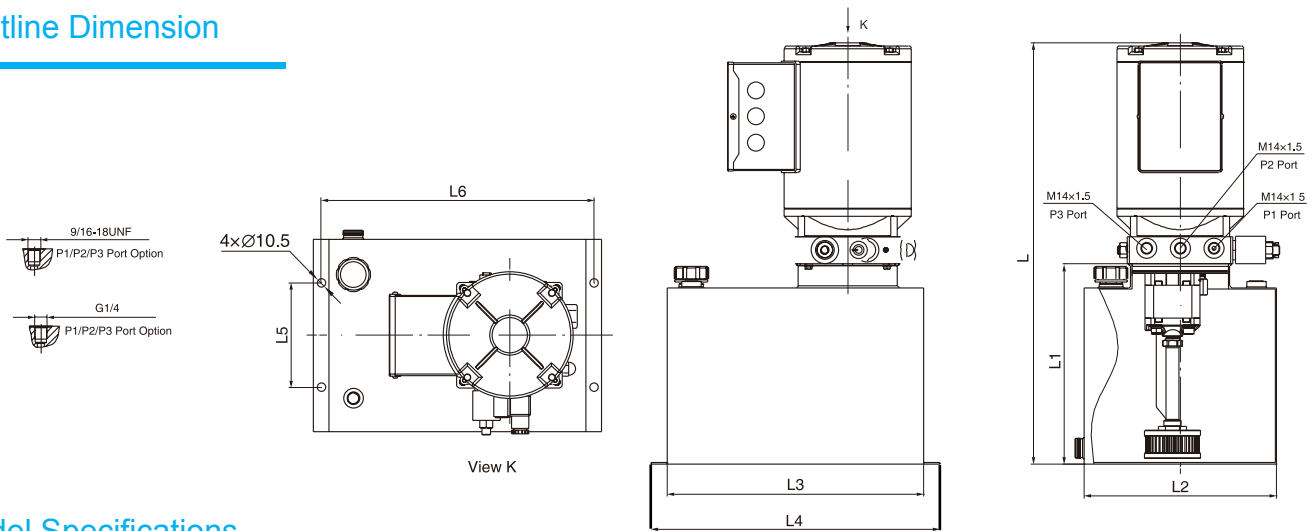


This power unit features typically power up, gravity down with machine weight function. The lowering movement is controlled by the solenoid valve while the lower speed is controlled by nonadjustable throttle valve.

Cartridge solenoid valve with manual override function is available on request.

AC motors with CSA or UL certification are available upon request.

## Outline Dimension



## Model Specifications

Model	Motor Volt	Motor Power	Rated Speed	Displacement	System Pressure	Tank Capacity	Solenoid Valve Volt	Dimension(mm)					
								L1	L2	L3	L4	L5	L6
HPP-2F2.115A380424V	380VAC	2.2KW	2850RPM	2.1mL/r	23MPa	15L	24VDC	516	240	260	340	180	320
HPP-2F2.120A380424V						20L		586	310	260	340	180	320
HPP-2F2.125A220424V						25L		586	310	290	360	210	340
HPP-2G2.515A220424V	220VAC	3KW	2.5mL/r	25MPa	15L	516		240	260	340	180	320	
HPP-2G2.520A380524V					20L	586		310	260	340	180	320	
HPP-2F2.715A380524V					2.7mL/r	23MPa		15L	586	310	290	360	210

## Special Notes

1)Due to various types of hydraulic system failure occur more than 80% of the problems are caused by hydraulic oil, so the correct use of hydraulic oil to ensure the system's reliability is very important.The oil viscosity should be 22-46mm<sup>2</sup>/s in accordance with ISO3448 viscosity classification.The hydraulic oil should be filtered by a 10-30um filter before put into use.N46 hydraulic oil is recommended.

2)Clean all the hydraulic parts concerned before mounting mini hydraulic power pack.Check the oil level in the tank after the initial running of small hydraulic power unit.

3)Oil changing is required after the initial 100 operation hours, afterwards once every 3000 hours.We are at your disposal to offer you the power unites with your favorite power,flow,pressure as well as the tank capacity.

4)The electric hydraulic pump should be vertical installation.

5)The electric hydraulic pump is of s3 duty, which can only work intermittently and repeatedly, i.e., 1 minute on and 9 minutes off.

6)To achieve thermal equilibrium of the electric motor, we have to assure that the ratio between interval time and operation time of mini hydraulic power pack is 1:9.