

Power Packs For Dock Levellers

General Description

Product: Power Unit For Dock Leveler

Reservoir Capacity: Steel or Plastic 1.58Gal

Motor: 380V AC 0.75KW

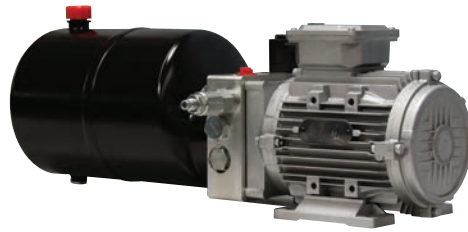
Flow: 0.80 to 1.03 GPM

Valve: Cartridge valve

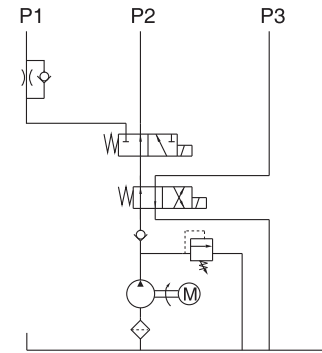
System Pressure: 1450/1885PSI

Oil Port: M14x1.5 P1/P2/P3

Manufacturer Warranty: 1 year Limited
Warranty



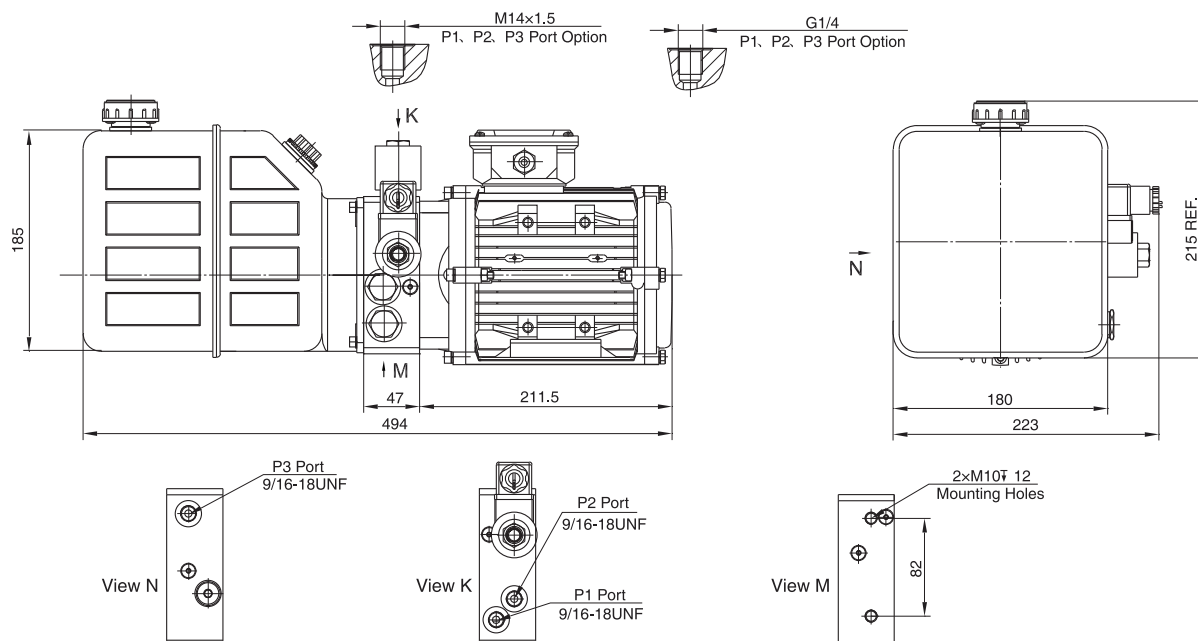
Hydraulic Circuit Diagram



This power unit is widely used for dock leveler which need to float ramps with an emergency stop function. The ramp will rise when the pump is working. The lip will extend automatically when the ramp cylinder finishes its stroke. The ramp cylinder will retract when the pump stops running. An emergency stop will be realized while the solenoid valve is energized. The lowering speeds of both the ramp and the lip are adjusted by the throttle valves in the system.

60HZ motors with CSA or UL certification are available upon request.

Outline Dimension



Model Specifications

Model	Motor Volt	Motor Power	Rated Speed	Displacement	System Pressure	Sequence pressure	Tank Capacity
HPP-180E2.16A3801H	380VAC	0.75KW	1450rpm	2.1mL/r	13MPa	8MPa	6L
HPP-180E2.76A3801H				2.7mL/r	10MPa	7.5MPa	

Special Notes

- 1) Due to various types of hydraulic system failure occur more than 80% of the problems are caused by hydraulic oil, so the correct use of hydraulic oil to ensure the system's reliability is very important. The oil viscosity should be 22-46mm²/s in accordance with ISO3448 viscosity classification. The hydraulic oil should be filtered by a 10-30um filter before put into use. N46 hydraulic oil is recommended.
- 2) Clean all the hydraulic parts concerned before mounting mini hydraulic power pack. Check the oil level in the tank after the initial running of small hydraulic power unit.
- 3) Oil changing is required after the initial 100 operation hours, afterwards once every 3000 hours. We are at your disposal to offer you the power unites with your favorite power, flow, pressure as well as the tank capacity.
- 4) The electric hydraulic pump is of s3 duty, which can only work intermittently and repeatedly, i.e., 1 minute on and 9 minutes off.
- 5) To achieve thermal equilibrium of the electric motor, we have to assure that the ratio between interval time and operation time of mini hydraulic power pack is 1:9.