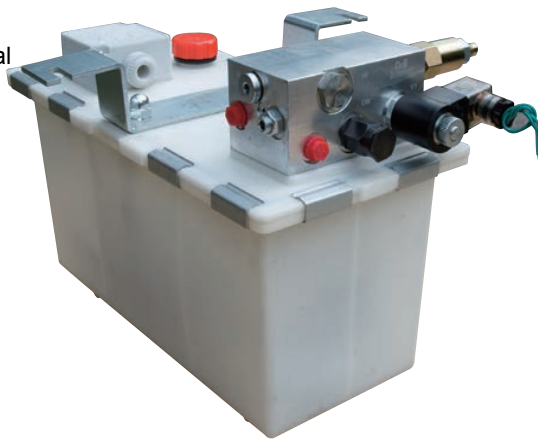


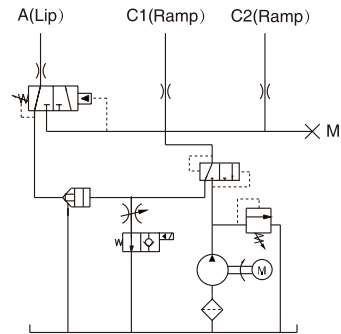
Power Packs For Dock Equipment

General Description

Product: Power Units For Dock Leveler
Reservoir Capacity: Steel or Plastic 1.05Gal
Motor: 380V 0.75KW
Flow: 0.77 to 1.18 GPM
Valve: 24VDC Solenoid valve
System Pressure: 2030PSI
Oil Port:G1/4 or M14x1.5
Manufacturer Warranty:1 year Limited
Warranty

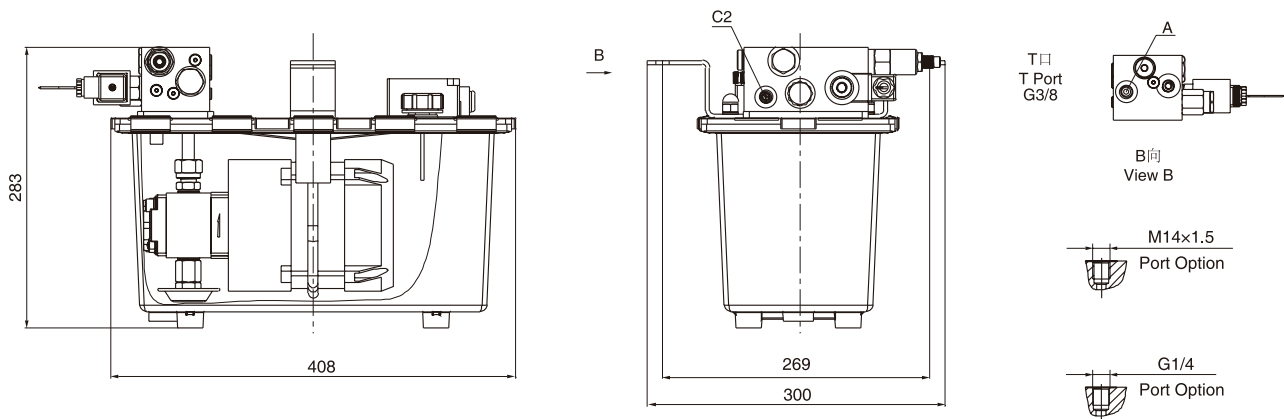


Hydraulic Circuit Diagram



The application of the normally open cartridge solenoid valve not only enables the ramp to float the truck, but also offers an emergency stop function for safety consideration. The submersion of the motor and pumping in the oil ensures the low noise level and keeps the power unit lifetime being for a long time.
60HZ motors with CSA or UL certification are available upon request.

Outline Dimension



Model Specifications

Model	Motor Volt	Solenoid Valve Volt	Motor Power	Rated Speed	Displacement	System Pressure	Tank Capacity	L(mm)
HPPY-81D3.24A380124H	380VAC	24VDC	0.75KW	1400RPM	3.2ml/r	14MPa	4L	408
HPPY-81D2.14A380124H					2.1ml/r			

Special Notes

- 1)Due to various types of hydraulic system failure occur more than 80% of the problems are caused by hydraulic oil, so the correct use of hydraulic oil to ensure the system's reliability is very important.The oil viscosity should be 22-46mm²/s in accordance with ISO3448 viscosity classification.The hydraulic oil should be filtered by a 10-30um filter before put into use.N46 hydraulic oil is recommended.
- 2)Clean all the hydraulic parts concerned before mounting mini hydraulic power pack.Check the oil level in the tank after the initial running of small hydraulic power unit.
- 3)Oil changing is required after the initial 100 operation hours, afterwards once every 3000 hours.We are at your disposal to offer you the power unites with your favorite power,flow,pressure as well as the tank capacity.
- 4)The electric hydraulic pump is of s3 duty,which can only work intermittently and repeatedly,i.e., 1 minute on and 9 minutes off.
- 5)To achieve thermal equilibrium of the electric motor, we have to assure that the ratio between interval time and operation time of mini hydraulic power pack is 1:9.