

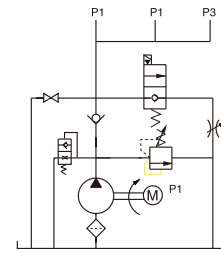
Power Unit For Electric Hydraulic Scissor Lift

General Description

Product: Power Unit For Scissor Lift
 Reservoir Capacity: Steel 3.96 to 6.6Gal
 Motor: 380V AC 2.2KW
 Flow: 1.58 to 2.03 GPM
 Valve: 24VDC Cartridge valve
 System Pressure: 3335/3625PSI
 Oil Port:G1/4 or M14x1.5 P1/P2/P3
 Manufacturer Warranty:1 year Limited
 Warranty



Hydraulic Circuit Diagram

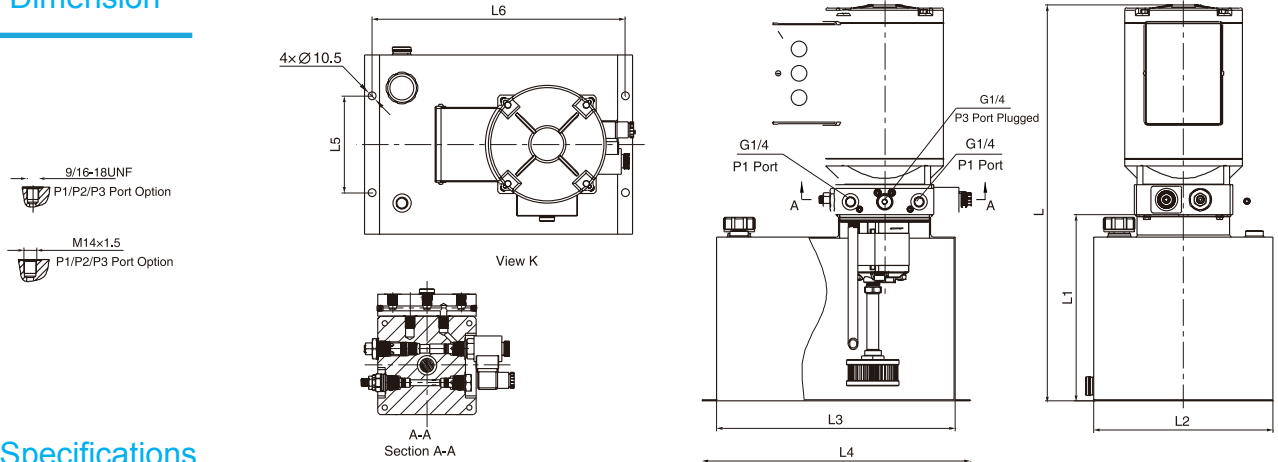


This power unit features typical power up, gravity down with machine weight function. The lowering movement is controlled by the solenoid valve while the lower speed is controlled by throttle valve.

Cartridge solenoid valve with manual override function is available on request.

AC motors with CSA or UL certification are available upon request.

Outline Dimension



Model Specifications

Model	Motor Volt	Motor Power	Rated Speed	Displacement	System Pressure	Tank Capacity	Solenoid Valve Volt	Dimension(mm)					
								L1	L2	L3	L4	L5	L6
HPP-2F2.115A380424V	380VAC	2.2KW	2850RPM	2.1mL/r	23MPa	15L	24VDC	522	240	260	300	180	320
HPP-2F2.120A380424V						20L		592	310	260	300	180	320
HPP-2F2.125A220424V						25L		592	310	290	320	210	340
HPP-2G2.515A220524V	220VAC	3KW	2.5mL/r	25MPa	15L	522		240	260	300	180	320	
HPP-2G2.520A380524V	20L				592	310		260	300	180	320		
HPP-2F2.715A380524V	380VAC				2.7mL/r	23MPa		15L	592	310	290	320	210

Special Notes

1)Due to various types of hydraulic system failure occur more than 80% of the problems are caused by hydraulic oil, so the correct use of hydraulic oil to ensure the system's reliability is very important.The oil viscosity should be 22-46mm²/s in accordance with ISO3448 viscosity classification.The hydraulic oil should be filtered by a 10-30um filter before put into use.N46 hydraulic oil is recommended.

2)Clean all the hydraulic parts concerned before mounting mini hydraulic power pack.Check the oil level in the tank after the initial running of small hydraulic power unit.

3)Oil changing is required after the initial 100 operation hours, afterwards once every 3000 hours.We are at your disposal to offer you the power unites with your favorite power,flow,pressure as well as the tank capacity.

4)The electric hydraulic pump should be horizontal installation.

5)The electric hydraulic pump is of s3 duty, i.e.,non-continuous operation, 30 seconds on and 270 seconds off.

6)To achieve thermal equilibrium of the electric motor, we have to assure that the ratio between interval time and operation time of mini hydraulic power pack is 1:9.