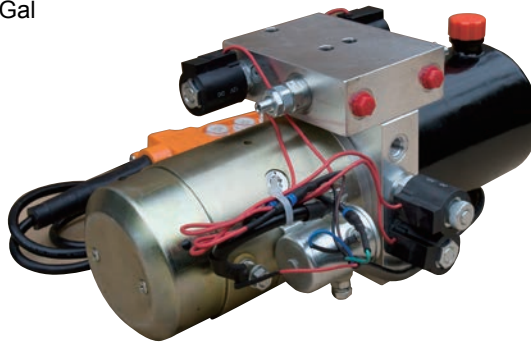


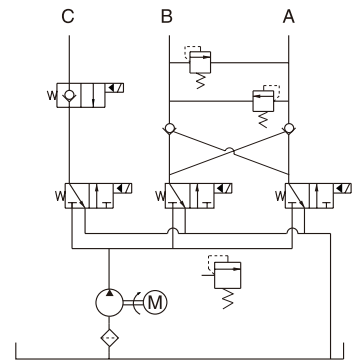
# Power Packs For Snow Plow

## General Description

- Product: DC hydraulic power unit
- Reservoir Capacity: Steel or Plastic 0.42Gal
- Motor:24V DC 2KW
- Flow:0.79 to 1.65GPM
- Valve: 12/24V DC Solenoid valve
- System Pressure: 2175PSI
- Oil Port:G1/4 P1/P2/P3
- Manufacturer Warranty:1 year Limited
- Warranty

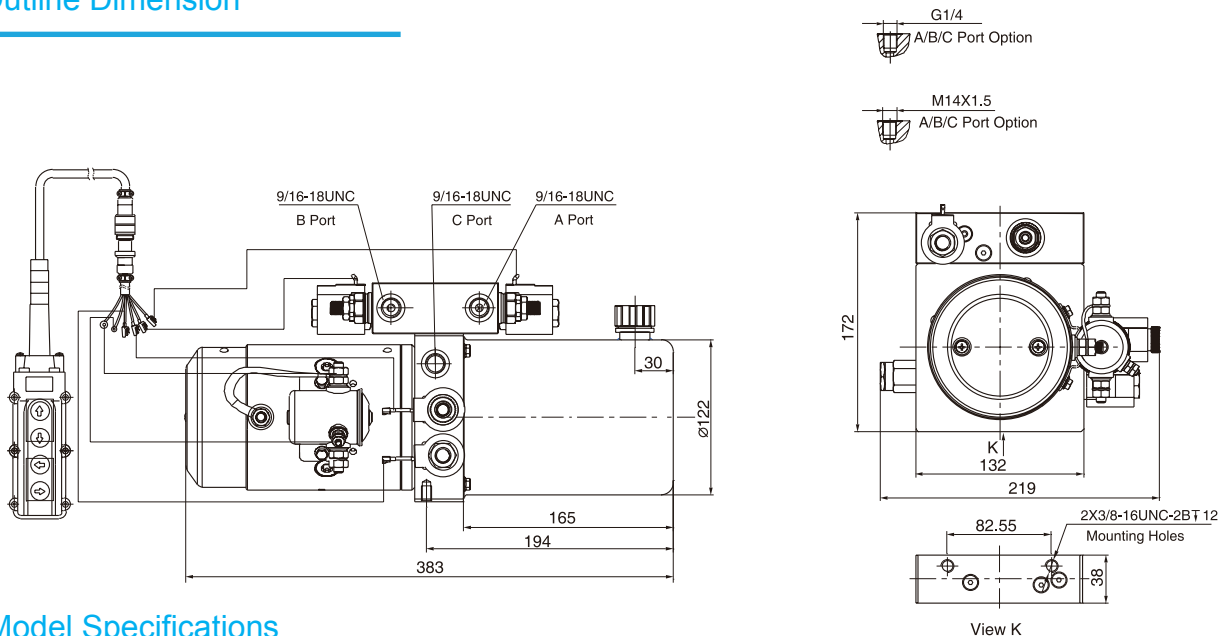


## Hydraulic Circuit Diagram



Snow Plow Power units is designed solely for snow plow, with the function of lifting, lowering, floating and angling.

## Outline Dimension



## Model Specifications

Model	Motor Volt	Motor Power	Rated Speed	Displacement	System Pressure	Tank Capacity	Solenoid Valve Volt
HPP-14E1.21.6D120312H	12VDC	1.5KW	2500RPM	1.2mL/r	15MPa	1.6L	12VDC
HPP-14E1.61.6D120312H				1.6mL/r			
HPP-14E2.11.6D240424H	24VDC	2KW		2.1mL/r			24VDC
HPP-14E2.51.6D240424H				2.5mL/r			

## Special Notes

- 1)Due to various types of hydraulic system failure occur more than 80% of the problems are caused by hydraulic oil, so the correct use of hydraulic oil to ensure the system's reliability is very important.The oil viscosity should be 22-46mm<sup>2</sup>/s in accordance with ISO3448 viscosity classification.The hydraulic oil should be filtered by a 10-30um filter before put into use.N46 hydraulic oil is recommended.
- 2)Before mounting mini hydraulic power pack,make sure that the hydraulic components such as oil cylinder, oil pipe and joint are clean without any adhesion.Check the oil level in the tank after the initial running of small hydraulic power unit.
- 3)Oil changing is required after the initial 100 operation hours, afterwards once every 3000 hours.We are at your disposal to offer you the power unites with your favorite power,flow,pressure as well as the tank capacity.
- 4)The electric hydraulic pump is of S3 duty,not continuous operation,30 seconds on and 270 seconds off.
- 5)To achieve thermal equilibrium of the electric motor, we have to assure that the ratio between interval time and operation time of mini hydraulic power pack is 1:9.