

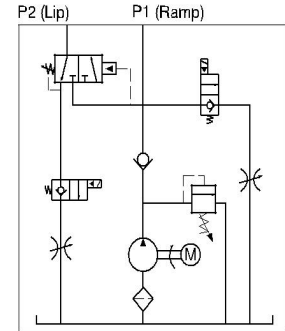
Power Packs For Dock Leveler

General Description

Product: Power Units For Dock Leveler
 Reservoir Capacity: Steel or Plastic 1.32Gal
 Motor: 380V 0.75KW
 Flow: 0.8 to 1.03 GPM
 Valve: Cartridge valve
 System Pressure: 2030/2320PSI
 Oil Port:G1/4 or M14x1.5
 Manufacturer Warranty:1 year Limited
 Warranty

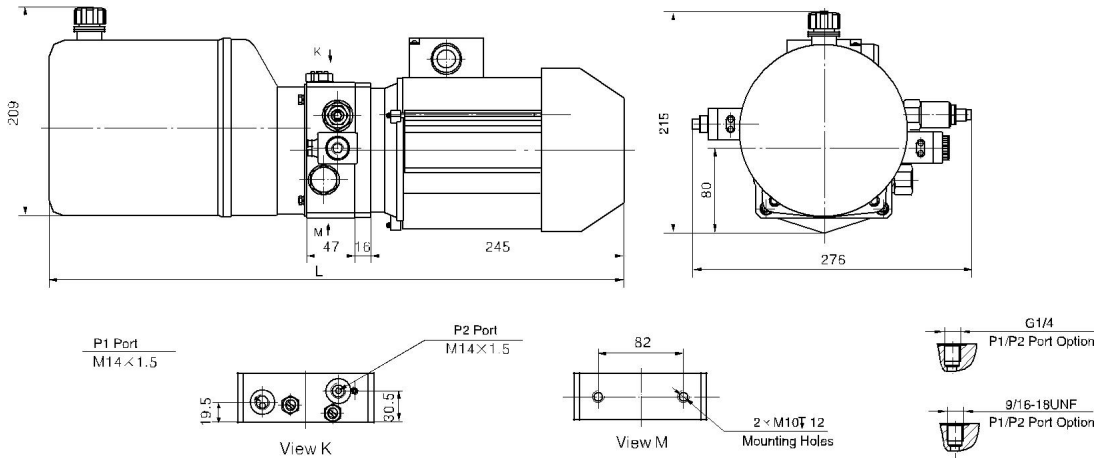


Hydraulic Circuit Diagram



Once the dock leveler ramp is fully lifted, the lip rises automatically. Both lowering movements are activated by the solenoid valves, while its speed is adjusted by the throttles valve. The manual override function is available on request.

Outline Dimension



Model Specifications

Model	Motor Volt	Motor Power	Displacement	System Pressure	Tank Capacity	L(mm)
HPP-10E2.15A3801	380VAC	0.75KW	2.1mL/r	16MPa	5L	558
HPP-10E2.75A3801			2.7mL/r	14MPa		

Special Notes

- 1)Due to various types of hydraulic system failure occur more than 80% of the problems are caused by hydraulic oil, so the correct use of hydraulic oil to ensure the system's reliability is very important.The oil viscosity should be 22-46mm²/s in accordance with ISO3448 viscosity classification.The hydraulic oil should be filtered by a 10-30um filter before put into use.N46 hydraulic oil is recommended.
- 2)Clean all the hydraulic parts concerned before mounting mini hydraulic power pack.Check the oil level in the tank after the initial running of small hydraulic power unit.
- 3)Oil changing is required after the initial 100 operation hours, afterwards once every 3000 hours.We are at your disposal to offer you the power unites with your favorite power,flow,pressure as well as the tank capacity.
- 4)The electric hydraulic pump is of s3 duty, which can only work intermittently and repeatedly,i.e., 1minute on and 9 minutes off.
- 5)To achieve thermal equilibrium of the electric motor, we have to assure that the ratio between interval time and operation time of mini hydraulic power pack is 1:9.