

Pallet Truck Power Packs

General Description

Product: Fork Lift Power Unit

Reservoir Capacity: Steel or Plastic 0.26 Gal

Motor: 24V DC 0.8KW

Flow: 0.46 TO 0.92 GPM

Valve: 12/24VDC Solenoid valve

System Pressure: 2320PSI

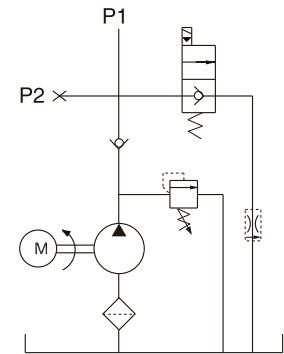
Oil Port:G1/4 or M14x1.5

Manufacturer Warranty:1 year Limited

Warranty



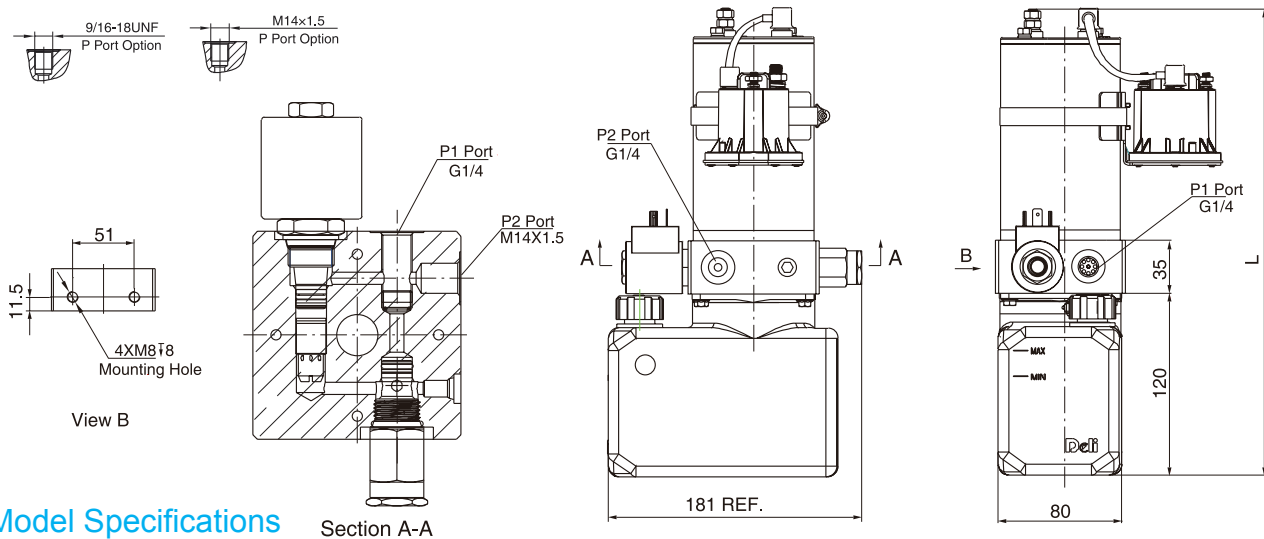
Hydraulic Circuit Diagram



This power unit has been widely used in the industry of logistic devices such as Pallet Truck, electric pallet jack and Electric stacker.

This power unit features the motor power up, gravity down with material weight. Pushing the start button on the motor lifts the material and the lowering speed is controlled by the solenoid valve and the pressure is compensated by the flow control valve.

Outline Dimension



Model Specifications

Model	Motor Volt	Motor Power	Nominal Speed	Displacement	System Pressure	Tank Capacity	Solenoid Valve Volt	L(mm)
HPP-2E0.51D120212V	12VDC	0.8KW	3500RPM	0.5mL/r	16MPa	1L	12VDC	308
HPP-2E0.631D120212V				0.63mL/r				
HPP-2E0.51D120224V	24VDC	0.8KW	3500RPM	0.5mL/r	16MPa	1L	24VDC	308
HPP-2E0.751D240124V				0.75mL/r				
HPP-2E1.01D240124V				1.0mL/r				

Special Notes

1)Due to various types of hydraulic system failure occur more than 80% of the problems are caused by hydraulic oil, so the correct use of hydraulic oil to ensure the system's reliability is very important.The oil viscosity should be 22-46mm²/s in accordance with ISO3448 viscosity classification.The hydraulic oil should be filtered by a 10-30um filter before put into use.N46 hydraulic oil is recommended.

2)Clean all the hydraulic parts concerned before mounting mini hydraulic power pack.Check the oil level in the tank after the initial running of small hydraulic power unit.

3)Oil changing is required after the initial 100 operation hours, afterwards once every 3000 hours.We are at your disposal to offer you the power unites with your favorite power,flow,pressure as well as the tank capacity.

4)The electric hydraulic pump should be vertical installation.

5)The electric hydraulic pump is of s3 duty, i.e., non-continuous operation, 30 seconds on and 270 seconds off.

6)To achieve thermal equilibrium of the electric motor, we have to assure that the ratio between interval time and operation time of mini hydraulic power pack is 1:9.