

Fork Lift Power Units

General Description

Product: Fork Lift Power Unit

Reservoir Capacity: Steel 0.92 to 2.11Gal

Motor: 24V DC 2KW

Flow: 0.79 TO 1.78 GPM

Valve: Cartridge valve

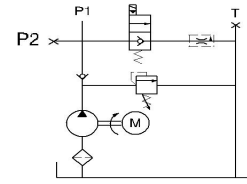
System Pressure: 2900PSI

Oil Port:G1/4,G3/8,M14x1.5

Manufacturer Warranty:1 year Limited
Warranty

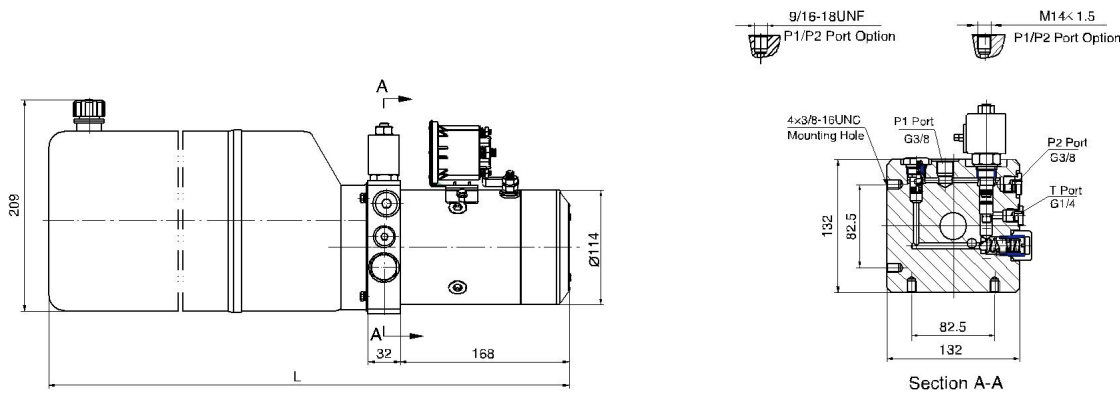


Hydraulic Circuit Diagram



This power unit features motor power up, gravity down with goods weight. Pushing the start button on the motor can lift the machine. The lowering movement is activated by the solenoid cartridge valve, while the lowering speed is controlled by the pressure compensated flow control valve in the return circuit. The power unit is also applied to the industry of logistic devices such as electric forklift, electric pallet jack, pallet lift table etc.

Outline Dimension



Model Specifications

Model	Motor Volt	Motor Power	Rated Speed	Displacement	System Pressure	Tank Capacity	L(mm)
HPP-2F1.23.5D1203H	12VDC	1.5KW	2500RPM	1.2mL/r	20MPa	3.5L	409
HPP-2F1.65D1203H				1.6mL/r		5L	459
HPP-2F2.15D1203H				2.1mL/r		5L	459
HPP-2F2.16D2404H	24VDC	2KW		2.1mL/r		6L	509
HPP-2F2.58D2404H				2.5mL/r		8L	579
HPP-2F2.78D2404H				2.7mL/r		8L	579

Special Notes

- 1)Due to various types of hydraulic system failure occur more than 80% of the problems are caused by hydraulic oil, so the correct use of hydraulic oil to ensure the system's reliability is very important.The oil viscosity should be 22-46mm²/s in accordance with ISO3448 viscosity classification.The hydraulic oil should be filtered by a 10-30um filter before put into use.N46 hydraulic oil is recommended.
- 2)Clean all the hydraulic parts concerned before mounting mini hydraulic power pack.Check the oil level in the tank after the initial running of small hydraulic power unit.
- 3)Oil changing is required after the initial 100 operation hours, afterwards once every 3000 hours.We are at your disposal to offer you the power unites with your favorite power,flow,pressure as well as the tank capacity.
- 4)The electric hydraulic pump is of s3 duty, which can only be worked intermittently,i.e., 1 minute on and 9 minutes off.
- 5)The electric hydraulic pump should be horizontal installation.
- 6)To achieve thermal equilibrium of the electric motor, we have to assure that the ratio between interval time and operation time of mini hydraulic power pack is 1:9.