

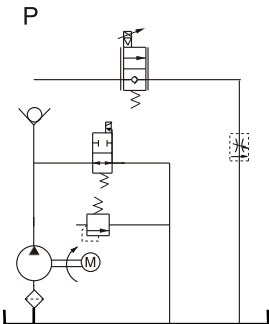
Electric Pallet Truck Power Packs

General Description

Product: Fork Lift Power Unit
Reservoir Capacity: Steel 3.17Gal
Motor: 24V DC 4KW
Flow: 2.11 to 2.77 GPM
Valve: 24VDC Solenoid valve
System Pressure: 2900PSI
Oil Port:G1/4,G3/8,M14x1.5
Manufacturer Warranty:1 year
Limited Warranty



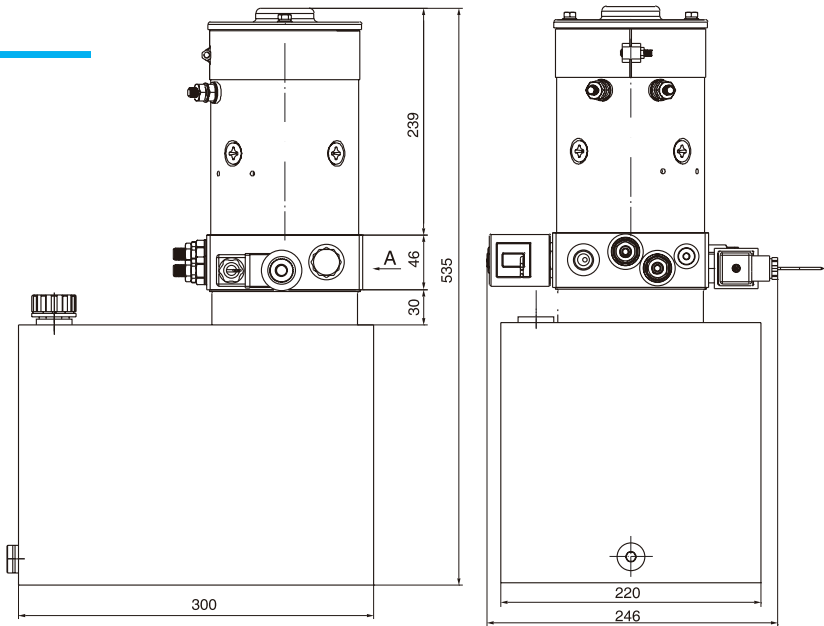
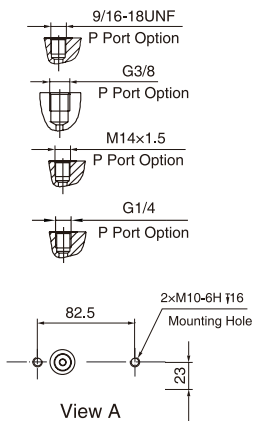
Hydraulic Circuit Diagram



This power unit features the motor power up, gravity down with material weight. By energizing 2 position 2 way cartridge solenoid valve can lift the material and energizing the electric-hydraulic proportional valve can achieve the lowering movement. The lowering speed is controlled by the electric-hydraulic proportional valve and the pressure is compensated by the flow control valve.

This power unit has been widely used in the industry of logistic devices such as Electric pallet truck, electric pallet jack and Electric pallet stacker.

Outline Dimension



Model Specifications

Model	Motor Volt	Motor Power	Nominal Speed	Displacement	System Pressure	Tank Capacity	Solenoid Valve Volt	Max Control Current
HPP-00F3.212D240724V	24VDC	4KW	2500RPM	3.2mL/r	20MPa	12L	24VDC	1100mAh
HPP-00F3.712D240724V				3.7mL/r				
HPP-00F4.212D240724V				4.2mL/r				

Special Notes

- 1)Due to various types of hydraulic system failure occur more than 80% of the problems are caused by hydraulic oil, so the correct use of hydraulic oil to ensure the system's reliability is very important.The oil viscosity should be 22-46mm²/s in accordance with ISO3448 viscosity classification.The hydraulic oil should be filtered by a 10-30um filter before put into use.N46 hydraulic oil is recommended.
- 2)Clean all the hydraulic parts concerned before mounting mini hydraulic power pack.Check the oil level in the tank after the initial running of small hydraulic power unit.
- 3)Oil changing is required after the initial 100 operation hours, afterwards once every 3000 hours.We are at your disposal to offer you the power unites with your favorite power,flow,pressure as well as the tank capacity.
- 4)The electric hydraulic pump should be horizontal installation.
- 5)The electric hydraulic pump is of s3 duty, i.e., 30 seconds on and 270 seconds off.
- 6)To achieve thermal equilibrium of the electric motor, we have to assure that the ratio between interval time and operation time of mini hydraulic power pack is 1:9.