

# Electric Lift Table Power Packs

## General Description

Product: Hydraulic Power Unit For Lift Table

Reservoir Capacity: Steel 3.17 to 6.6 Gal

Motor: 220V AC 2.2KW

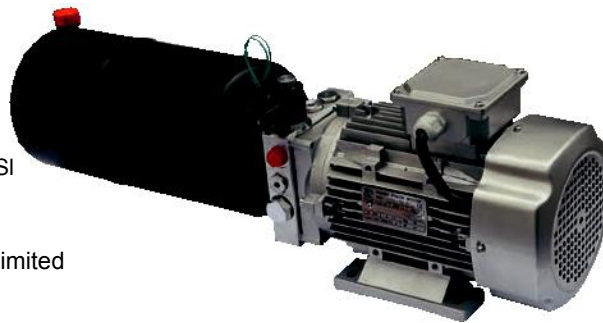
Flow: 1.85 to 3.7 GPM

Valve: Cartridge valve

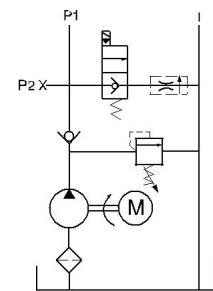
System Pressure: 1740 to 2610PSI

Oil Port:G1/4 or M14x1.5

Manufacturer Warranty:1 year Limited  
Warranty

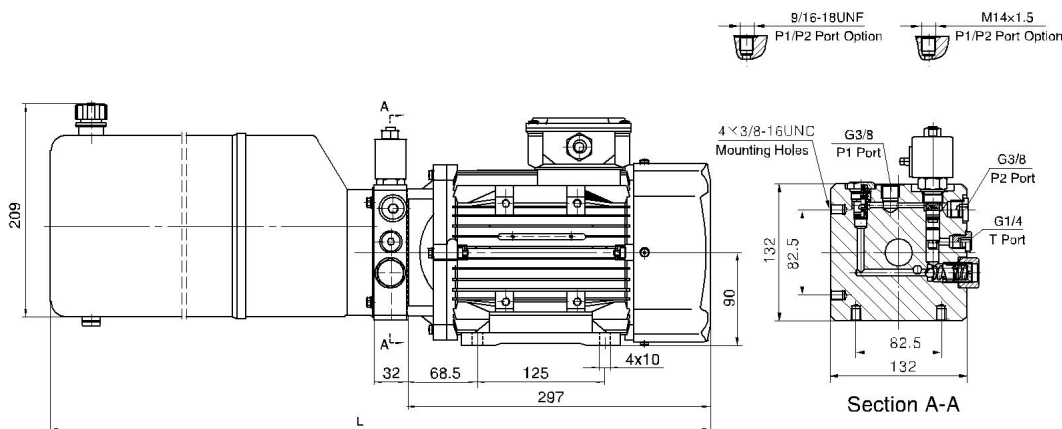


## Hydraulic Circuit Diagram



Hydraulic Power Units For Lift Table has been widely used in the industry of logistic devices such as Electric lift table, Scissor Table and Pallet Lift Table. The lowering movement is controlled by the cartridge solenoid valve and its speed is controlled by the adjustable throttle valve, which can protect the lift table effectively. The manual override function is available on request. 60HZ motors with CSA or UL certification are available upon request.

## Outline Dimension



## Model Specifications

Model	Motor Volt	Motor Power	Rated Speed	Displacement	System Pressure	Tank Capacity	L(mm)
HPP-2F2.512A2204	220VAC	2.2KW	2800rpm	2.5mL/r	18MPa	12L	677
HPP-2E3.214A2204				3.2mL/r	14MPa	14L	727
HPP-2D3.716A2204				3.7mL/r	12MPa	16L	777
HPP-2E3.716A3805	380VAC	3KW		3.7mL/r	16MPa	16L	777
HPP-2E4.220A3805				4.2mL/r	15MPa	20L	877
HPP-2D525A3805				5mL/r	12MPa	25L	1002

## Special Notes

1)Due to various types of hydraulic system failure occur more than 80% of the problems are caused by hydraulic oil, so the correct use of hydraulic oil to ensure the system's reliability is very important.The oil viscosity should be 22-46mm<sup>2</sup>/s in accordance with ISO3448 viscosity classification.The hydraulic oil should be filtered by a 10-30um filter before put into use.N46 hydraulic oil is recommended.

2)Clean all the hydraulic parts concerned before mounting mini hydraulic power pack.Check the oil level in the tank after the initial running of small hydraulic power unit.

3)Oil changing is required after the initial 100 operation hours, afterwards once every 3000 hours.We are at your disposal to offer you the power unites with your favorite power,flow,pressure as well as the tank capacity.

4)The electric hydraulic pump is of s3 duty, i.e., non-continuous operation, 30 seconds on and 270 seconds off.

5)To achieve thermal equilibrium of the electric motor, we have to assure that the ratio between interval time and operation time of mini hydraulic power pack is 1:9.