

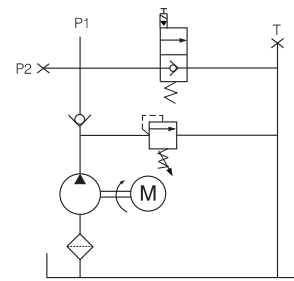
Dump Trailer Hydraulic Pump

General Description

Product: Hydraulic Pump for Dump Trailer
 Reservoir Capacity: Steel 3.17 to 5.28Gal
 Motor: 24V DC 2KW
 Flow: 1.38 to 1.78 GPM
 Valve: Solenoid valve
 System Pressure: 2610/2900PSI
 Oil Port:G1/4,G3/8,M14x1.5
 Manufacturer Warranty:1 year Limited Warranty



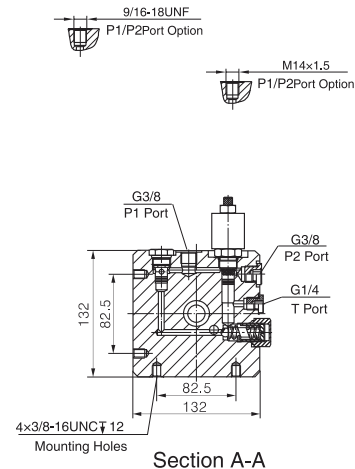
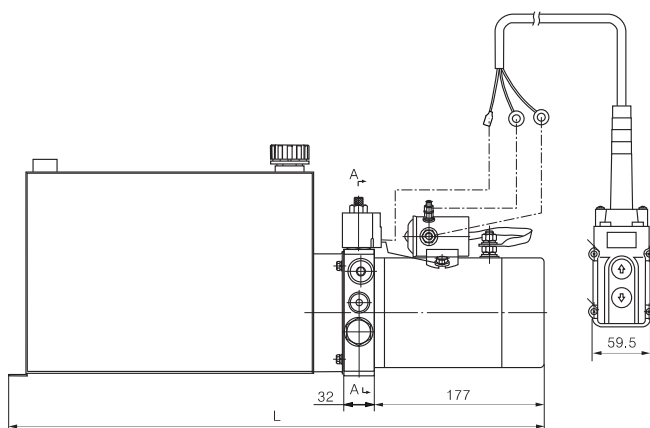
Hydraulic Circuit Diagram



This power unit is designed solely for dump trailer, by motor power up, gravity down with vehicle weight. To push the start button on the motor can lift the trailer. The lowering movement is activated by the solenoid cartridge valve, while the lowering speed is controlled by cartridge flow valve in the return circuit.

The power unit is also applied in the industry of logistic devices such as hydraulic dump trailer, trailer dump, Dumping trailers and utility trailers etc.

Outline Dimension



Model Specifications

Model	Motor Volt	Motor Power	Rated Speed	Displacement	System Pressure	Tank Capacity	L(mm)
HPP-2F2.112D1203H	12VDC	1.5KW	2500RPM	2.1mL/r	20MPa	12L	559
HPP-2F2.520D1203H				2.5mL/r		20L	791
HPP-2F2.512D2404H	24VDC	2.0KW		2.7mL/r		18MPa	12L
HPP-2F2.716D2404H				16L	676		

Special Notes

- 1)Due to various types of hydraulic system failure occur more than 80% of the problems are caused by hydraulic oil, so the correct use of hydraulic oil to ensure the system's reliability is very important.The oil viscosity should be 22-46mm²/s in accordance with ISO3448 viscosity classification.The hydraulic oil should be filtered by a 10-30um filter before put into use.N46 hydraulic oil is recommended.
- 2)Clean all the hydraulic parts concerned before mounting mini hydraulic power pack.Check the oil level in the tank after the initial running of small hydraulic power unit.
- 3)Oil changing is required after the initial 100 operation hours, afterwards once every 3000 hours.We are at your disposal to offer you the power unites with your favorite power,flow,pressure as well as the tank capacity.
- 4)The electric hydraulic pump should be horizontal installation.
- 5)The electric hydraulic pump is of s3 duty, which can only work intermittently and repeatedly,i.e., 30 seconds on and 270 seconds off.
- 6)To achieve thermal equilibrium of the electric motor, we have to assure that the ratio between interval time and operation time of mini hydraulic power pack is 1:9.