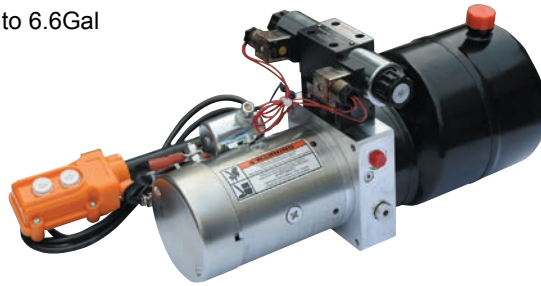


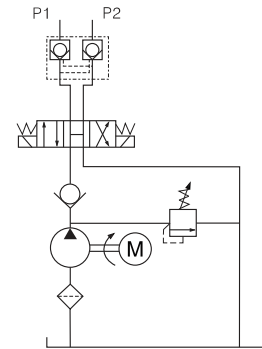
Double Action Hydraulic Pump

General Description

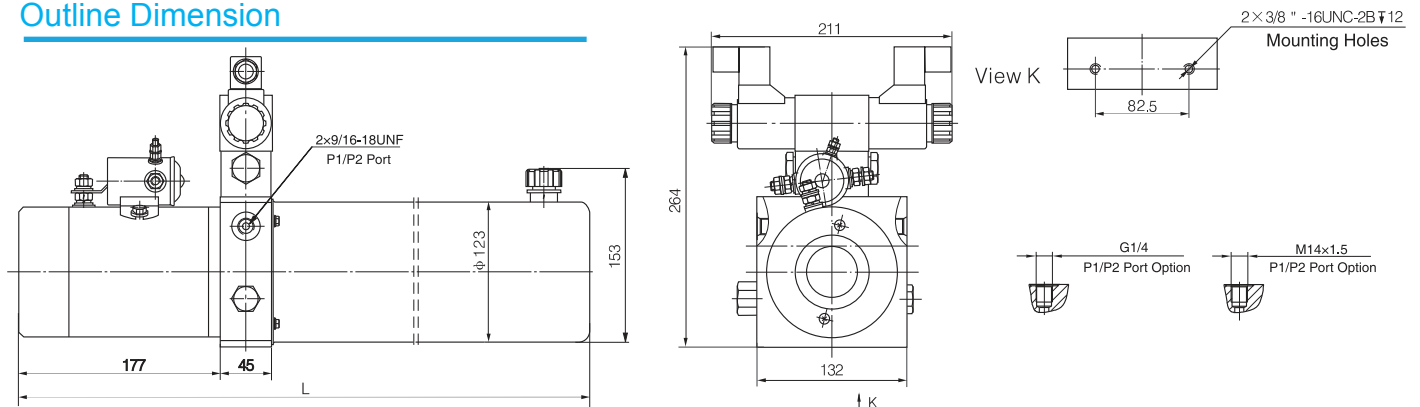
Product: Double Acting Hydraulic Power Unit
 Reservoir Capacity: Steel or Plastic 0.79 to 6.6Gal
 Motor: 24V DC 2.2KW
 Flow: 1.00 to 3.11 GPM
 Valve: Cartridge valve
 System Pressure: 1450 to 3190PSI
 Oil Port:G1/4 or M14x1.5
 Manufacturer Warranty:1 year Limited
 Warranty



Hydraulic Circuit Diagram



Outline Dimension



Model Specifications

Model	Motor Volt	Motor Power	Rated Speed	Displacement	System Pressure	Tank Capacity	L(mm)
HPP-209F2.13D1203H	12VDC	1.5KW	2500RPM	2.1mL/r	20MPa	3L	567
HPP-209F2.55D2404H	24VDC	2KW		2.5mL/r	20MPa	5L	472
HPP-209F2.76A2203H	220VAC	1.5KW	1400RPM	2.7mL/r	22MPa	6L	642
HPP-209F3.212A2203H				3.2mL/r	20MPa	12L	692
HPP-209F2.514A2204H		2.2KW	2800RPM	2.5mL/r	18MPa	14L	665
HPP-209E3.216A2204H				3.2mL/r	15MPa	16L	597
HPP-209D4.216A2204H	4.2mL/r			10MPa	16L	597	
HPP-209F2.720A3805H	380VAC	3KW		2800RPM	2.7mL/r	20MPa	20L
HPP-209F3.222A3805H			3.2mL/r		18MPa	22L	1015
HPP-209E3.725A3805H			3.7mL/r		16MPa	25L	1100

Special Notes

- 1)Due to various types of hydraulic system failure occur more than 80% of the problems are caused by hydraulic oil, so the correct use of hydraulic oil to ensure the system's reliability is very important.The oil viscosity should be 22-46mm²/s in accordance with ISO3448 viscosity classification.The hydraulic oil should be filtered by a 10-30um filter before put into use.N46 hydraulic oil is recommended.
- 2)Clean all the hydraulic parts concerned before mounting mini hydraulic power pack.Check the oil level in the tank after the initial running of small hydraulic power unit.
- 3)Oil changing is required after the initial 100 operation hours, afterwards once every 3000 hours.We are at your disposal to offer you the power unites with your favorite power,flow,pressure as well as the tank capacity.
- 4)The electric hydraulic pump should be horizontal installation.
- 5)The electric hydraulic pump is of s3 duty, i.e., 30 seconds on and 270 seconds off.
- 6)To achieve thermal equilibrium of the electric motor, we have to assure that the ratio between interval time and operation time of mini hydraulic power pack is 1:9.
- 7)Mechanical locks are needed on both platforms to use this product.