

# Car Lift Power Units

## General Description

Product: Auto Hoist Power Units

Reservoir Capacity: Steel or Plastic 1.58 to 3.70Gal

Motor:230V AC 1.1KW

Flow:0.59 to 1.09GPM

Valve:Cartridge valve

System Pressure:2537.5/2900PSI

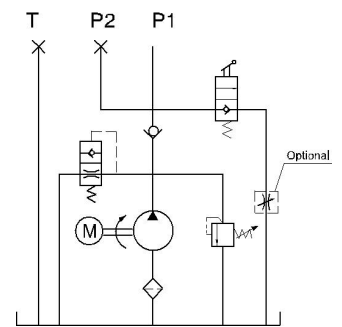
Oil Port:G1/4 or M14x1.5 P1/P2

Manufacturer Warranty:1 year Limited

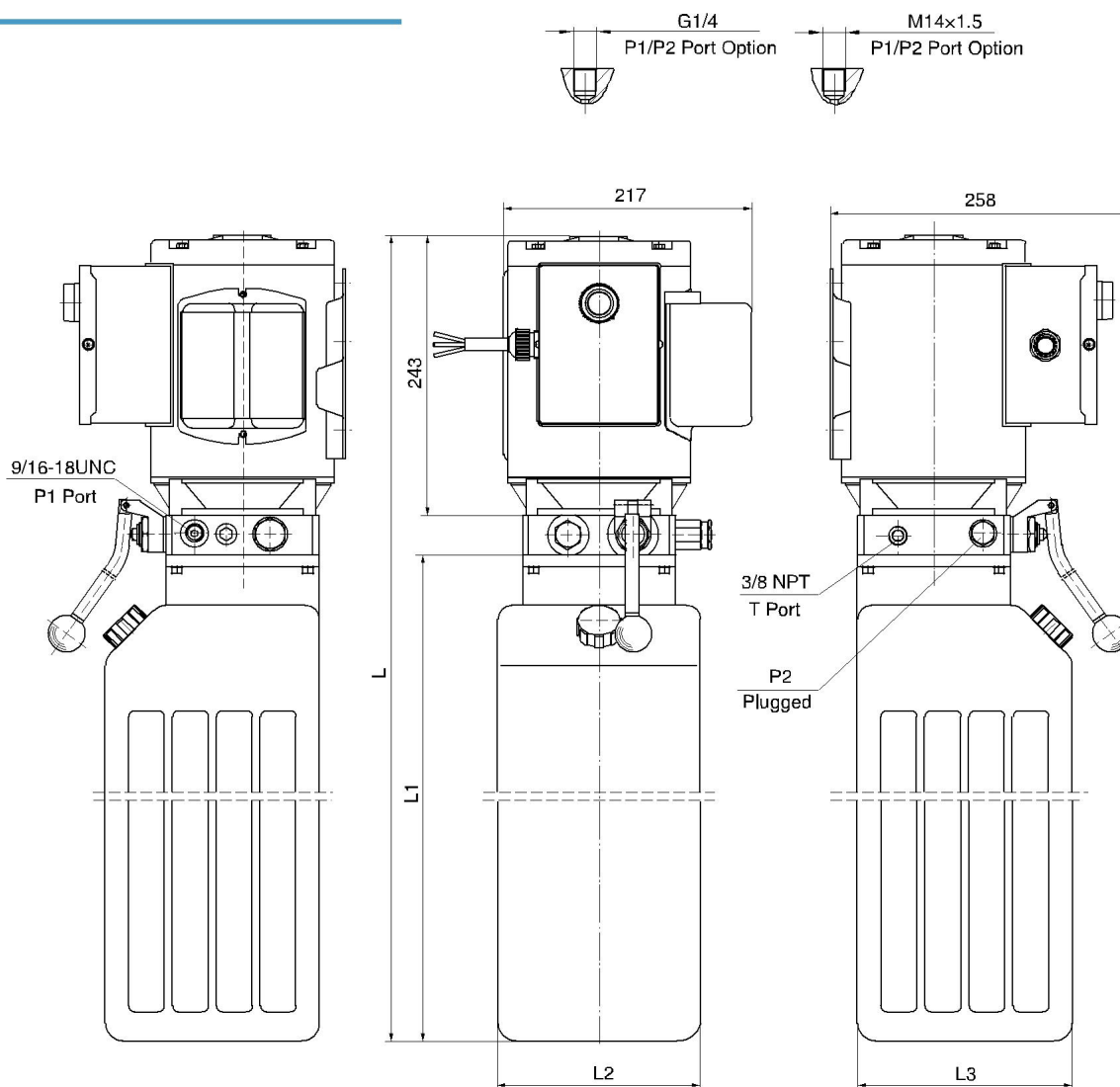
Warranty



## Hydraulic Circuit Diagram



## Outline Dimension



## Model Specifications

Model	Motor Volt	Motor Power	Displacement	System Pressure	Rated Speed	Tank Capacity	Dimension(mm)			
							L1	L2	L3	L
HPP-1F0.86A11502V	115V 60Hz	1.1KW	0.8mL/r	20MPa	3450RPM	6L	335	180	180	611
HPP-1F0.88A11502V						8L	440			716
HPP-1E1.26A11502V			1.2mL/r	17.5MPa		6L	335			611
HPP-1E1.28A11502V						8L	440			716
HPP-1F0.86A115/23002V	115/230V 50/60Hz		0.8mL/r	20MPa	2830/3450R  PM	6L	335			611
HPP-1F0.88A115/23002V						8L	440			716
HPP-1E1.26A115/23002V			1.2mL/r	17.5MPa		6L	335			611
HPP-1E1.28A115/23002V						8L	440			716
HPP-1F2.112A208/24004V	208-240v	2.2KW	2.1mL/r	20MPa	2830/3450R	12L	540	165	185	816
HPP-1F2.114A208/24004V	50/60Hz				PM	14L	600	175	185	876
HPP-1F2.112A230/46004V	230/460v				3450RPM	12L	540	165	185	816
HPP-1F2.114A230/46004V	60Hz					14L	600	175	185	876
HPP-1F2.112A3804V	190/208/240 /380/460V 50/60Hz		2.5mL/r	17.5MPa	2830/3450R	12L	540	165	185	816
HPP-1F2.514A3804V					PM	14L	600	175	185	876
HPP-1E4.212A3804V			4.2mL/r		1450/1725R PM	12L	540	165	185	816
HPP-1E4.214A3804V						14L	600	175	185	876

## Special Notes

- 1)Due to various types of hydraulic system failure occur more than 80% of the problems are caused by hydraulic oil, so the correct use of hydraulic oil to ensure the system's reliability is very important.The oil viscosity should be 22-46mm<sup>2</sup>/s in accordance with ISO3448 viscosity classification.The hydraulic oil should be filtered by a 10-30um filter before put into use.N46 hydraulic oil is recommended.
- 2)Clean all the hydraulic parts concerned before mounting mini hydraulic power pack.Check the oil level in the tank after the initial running of small hydraulic power unit.
- 3)Oil changing is required after the initial 100 operation hours, afterwards once every 3000 hours.We are at your disposal to offer you the power unites with your favorite power,flow,pressure as well as as the tank capacity.
- 4)The electric hydraulic pump should be vertical installation.
- 5)The AC motor of electric hydraulic pump is of s3 duty,which can only work intermittently and repeatedly, i.e., 1 minute on and 9 minutes off.
- 6)To achieve thermal equilibrium of the electric motor, we have to assure that the ratio between interval time and operation time of mini hydraulic power pack is 1:9.