

Auto Lift Power Unit

General Description

Product: Auto Hoist Power Units

Reservoir Capacity: Steel or Plastic 1.5 to 3.2Gal

Motor: 380V AC 2.2KW

Flow: 1.50 to 2.24GPM

Valve: Cartridge valve

System Pressure: 2320/2900PSI

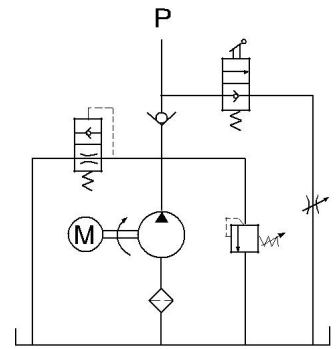
Oil Port: M14x1.5 A/B

Manufacturer Warranty: 1 year Limited

Warranty

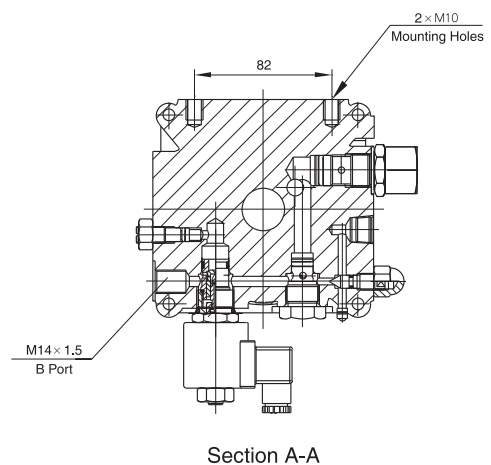
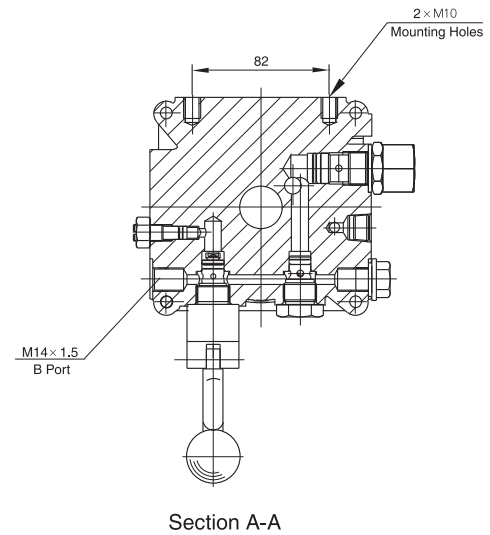
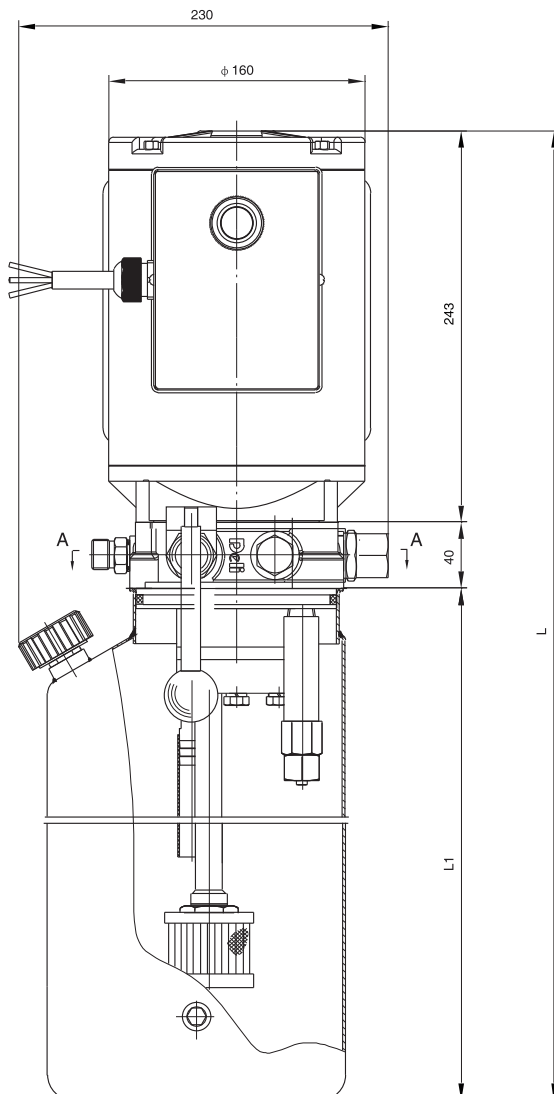


Hydraulic Circuit Diagram



The electric-basketball Stands Power Units is designed exclusively for the electric-basketball stand, consisting of two independent, typical "power up, gravity down" circuits for the up and down movements of the basketball board and the whole basketball stand. The pressure switch will stop the motor once the basketball or the whole stand is compensated by the balance valves which make the lowering movements very smooth.

Outline Dimension



Model Specifications

Model	Motor Volt	Motor Power	Displacement	System Pressure	Rated Speed	Tank Capacity	Total length(mm)	
							L1	L
HPP-1E210A2204V	220VAC	2.2KW	2mL/r	16MPa	2830RPM	10L	440	717
HPP-1E36A2204V			3mL/r			6L	300	577
HPP-1E28A2204V			8L			370	647	
HPP-1E10A3804V	380VAC		2mL/r			10L	440	717
HPP-1E26A3804V			6L			300	577	
HPP-1E28A3804V			8L			370	647	
HPP-1E310A3804V		10L	440	717				
HPP-1E312A3804V		3mL/r	12L	540	817			
HPP-1E310A3805V		3KW	3mL/r	20MPa	10L	440	717	
HPP-1F2.18A2203V	220VAC	1.5KW	2.1mL/r		8L	370	647	
HPP-1F2.510A3804V	380VAC	2.2KW	2.5mL/r		10L	440	717	

Special Notes

- 1)Due to various types of hydraulic system failure occur more than 80% of the problems are caused by hydraulic oil, so the correct use of hydraulic oil to ensure the system's reliability is very important.The oil viscosity should be 22-46mm²/s in accordance with ISO3448 viscosity classification.The hydraulic oil should be filtered by a 10-30um filter before put into use.N46 hydraulic oil is recommended.
- 2)Clean all the hydraulic parts concerned before mounting mini hydraulic power pack.Check the oil level in the tank after the initial running of small hydraulic power unit.
- 3)Oil changing is required after the initial 100 operation hours, afterwards once every 3000 hours.We are at your disposal to offer you the power unites with your favorite power,flow,pressure as well as the tank capacity.
- 4)The electric hydraulic pump should be horizontal installation.
- 5)To achieve thermal equilibrium of the electric motor, we have to assure that the ratio between interval time and operation time of mini hydraulic power pack is 1:9.