

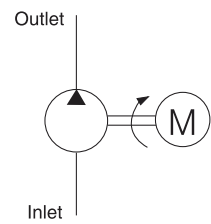
AC Pump Motor

General Description

Product: Hydraulic power unit
 Flow: 4~15cc/r Gear
 Valve: No valve
 System Pressure: 8~20Mpa
 Manufacturer Warranty: 1 year Limited
 Warranty



Hydraulic Circuit Diagram



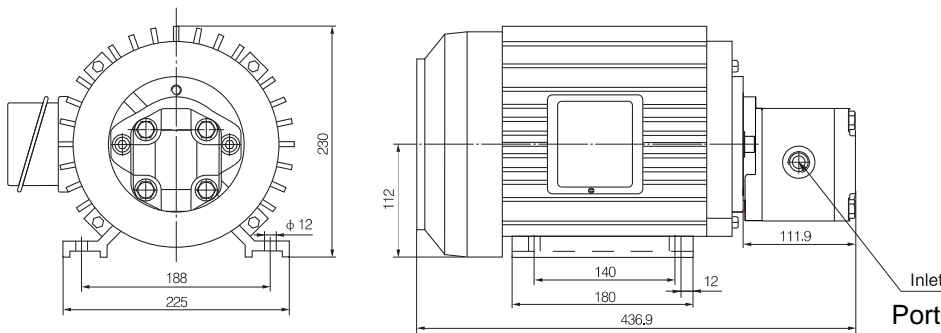
The AC pump motor refers to an AC Motor driving a Hydraulic gear pump assembly. AC Motors are either 220V 1 phase or 380V 3 phase. The motors are the IP55 standard and the aluminum body motor power is 1.5kW, cast iron motor power is 3.7KW. An aluminum bell-housing encloses an elastic coupling ensuring a mechanical drive with low noise transmission.

Ordering Code

AMP-2A □□-□□□□-□



Outline Dimension



Port size is according to the customer's need different displacement.

Model Specifications

Model	Motor Volt	Motor Power	Rated Speed	Displacement	System Pressure
AMP-E4A3803H	380VAC	1.5KW	1400RPM	4mL/r	14MPa
AMP-F7A3806H		3.7KW		7mL/r	20MPa
AMP-D11A3805H		3KW		11mL/r	10MPa
AMP-C14A3805H		3KW		14mL/r	8MPa
AMP-D15A3806H		3.7KW		15mL/r	9MPa